

Pre-start information

RAIN JACKET in the distance and DRY WARM CLOTHES after the finish!

The main thing to consider is the special weather conditions on the day of the competition! The forest will be wet and slippery, rain is expected in the middle of the day, so a rain jacket will be important for maintaining well-being during the distance!

Event time: 29 of October, 2022.

Event place: Dzerbene, parish Dzerbene, county Cesis.

Event centre: [KETAS](#), [Dzērbenes pagasts](#), [57.217713](#), [25.717054](#).

Organizer

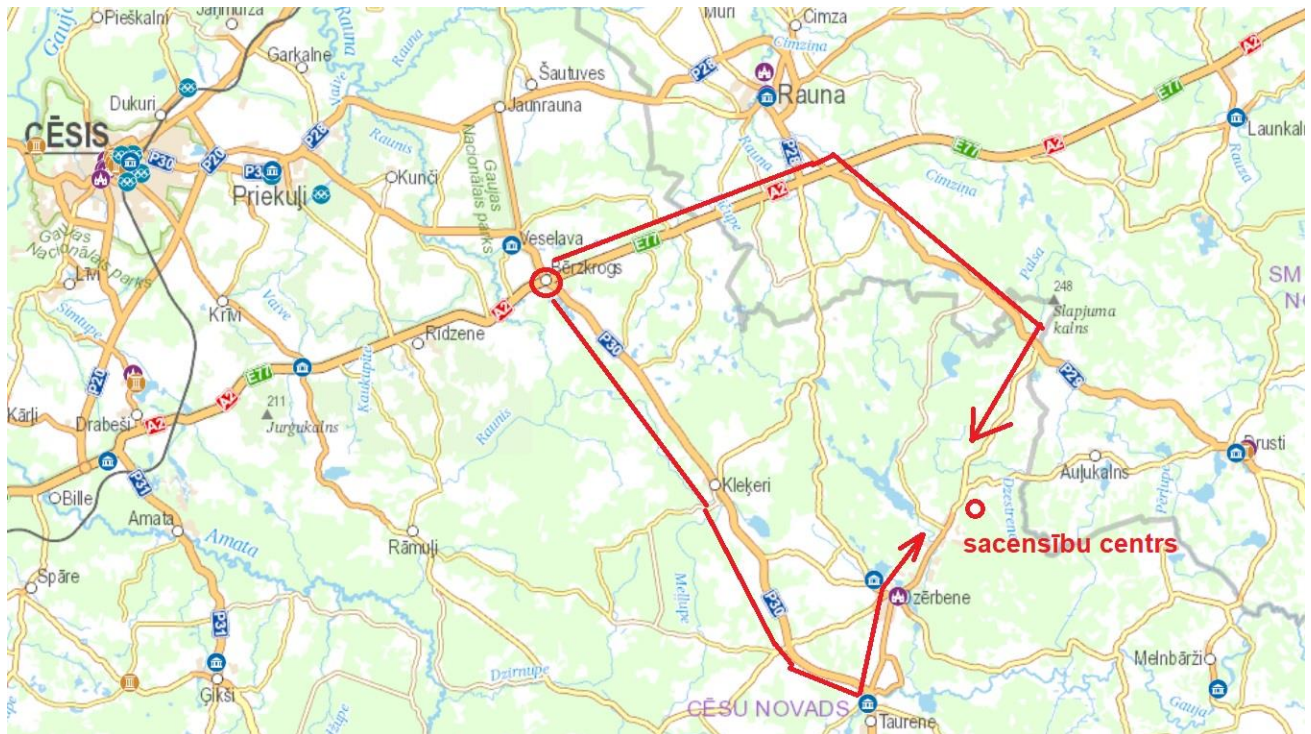
Society "Sporta klubs R24.LV".

Supported by: Vecpiebalga association administration and Latvian Orienteering federation (LOF).

Event director, course setter: Valters Kaminskis

Mapping: Pēteris Blumbergs.

The competition is included in the LOF competition calendar, Latvian Rogaining rating (LRR) stage.

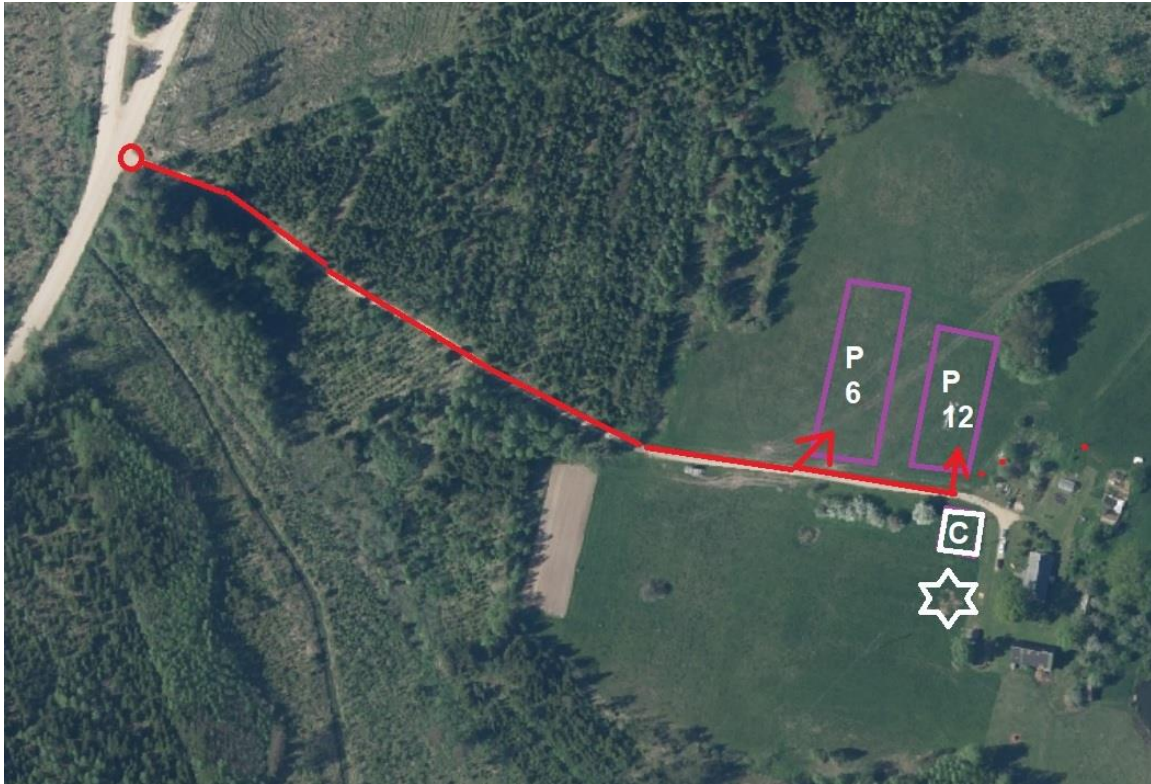


Arrival.

The main reference point on the way to the competition center is the settlement BĒRZKROGS, where it is possible to visit the gas station K CIRCLE. Next, there are 2 equally important alternatives: 1) using the road Rauna - Jaunpiebalga (asphalted since 2021) and its branch to Dzerbeni (quality gravel road); 2) using the road Cēsis - Madona in the section to Taurene, then turning to Dzērbeni and passing through it we reach the competition center.

Parking.

The competition center is located in the KETAS property. The parking lot will be arranged in a meadow. Please move through the meadow following the signs to the instructions of the regulators. The parking area will be divided into 2 parts: P6 - parking area for 6-hour competition participants, P12 (P24) - parking area for 12-hour competition participants. Mobile toilets will be available next to the parking lot.

**Competition Program**

October 29

from 07:30 arrival of participants at the competition center, registration

08:21 sunrise

09:00 giving out of maps

10:00 start of the competition

12:00 giving out of maps for mtb competition

13:00 mtb competition start

16:00 Finish of the 6-hour competition

16:30 End of 6-hour competition

17:00 Final event of the 6-hour competition

17:39 sunset

19:00 mtb competition finish

19:30 end of mtb competition

20:00 mtb competition closing event

22:00 Finish of the 12-hour competition

22:30 End of 12-hour competition

23:00 closing event of the 12-hour competition

Closing of the competition center at 24:00

Registration before the start.

The competition center will be located in the closed main tent and the star tent next to it. Tables with benches will be available before the start and after the finish for the participants' convenience. The team is registered by the team representative, who receives the team inventory - SIAC IDs and wristbands. Member numbers and pins will not be issued.

Sets of competition maps will be handed out at the main tent. Each team will receive a map for each member, plus 1 map for planning per team. All maps are SAME, laminated on both sides, sheet size 50 x 70 cm. Map scale 1:20000. It is recommended to tape the edges of the card, then the cards will be completely moisture-proof!

Start

The start is shared by all participants of the competition, except for the MTB qualifying groups. Ident cards will be cleared. When entering the starting area, the ident card must be marked CHECK. Please hand over the car keys to the judges upon entering the starting area, separate 6-hour and 12-hour competition participants!

During distance.

1. The competition area is located in the forest area managed by Dzerbene Parish and A/S LATVIA'S STATE FORESTS.

Protect and respect the values created by nature and people!

2. Only a compass, wristwatch and the competition map issued by the organizers may be used for navigation. Any other equipment and facilities may be used for non-navigational purposes.

3. Meeting dogs and forest animals is possible at a distance.

4. When moving on public roads and streets, traffic rules must be followed, in the dark reflectors and lights must be used during darkness.

5. It is forbidden to cross the yards of homesteads, unless a road passes through them. It is recommended to go around the homesteads so as not to disturb residents. Prohibited areas - residential areas, gardens, cemeteries - marked olive green on the map. Other prohibited territories on the map (nature micro-reserves, crop fields and dangerous places) masked with a red grid.

6. Each team must bring a switched-off mobile phone with a charged battery for emergencies

. The mobile phone number of the organizers will be indicated on the race map.

7. Each team in the distance must bring a WHISTLE. If necessary, the team using a whistle, with several series of short beeps to report their location in case of emergency assistance or an animal encountered on the team's path that threatens the safety of the team.

There will be 3 watering points in the competition area. They will have drinking water in cans, as well as thermoses with tea. For drinking tea, please use the glasses provided by the organizers and use a sippy cup. Please leave the thermoses closed!

A special request: do not go into the yards of homesteads without a special need, do not damage electric shepherds and do not throw garbage!

In cases where the checkpoint cannot be found in the distance (stolen) or the marking device is not working, send an SMS to the emergency number (on the map) with the team number and the specific checkpoint number (example 211 KP51).

BEST REGARDS!