



Bulletin Nr. 2 (19.10.2022.)~~Bulletin Nr. 1~~

Event time: 29 of October, 2022.

Event place: ~~Dzērbene~~, ~~parish~~ ~~Dzērbene~~ ~~Parish~~, ~~county~~ ~~Cēsis~~ ~~Municipality~~.

Event centre: **KETAS, Dzērbenes parish, 57.217713, 25.717054.**

~~will be announced in the next bulletin.~~



Organizer

Society "Sporta klubs R24.LV".

Supported by: Vecpiebalga ~~Association~~ ~~Administration~~ and Latvian Orienteering ~~Federation~~ (LOF).

Event director, course setter: Valters Kaminskis

Mapping: ~~Pēteris~~ Blumbergs.

The competition is ~~included in the LOF competition calendar~~, Latvian Rogaining rating (LRR) stage. ~~included in the LOF competition calendar~~

Rules

Event format: rogaining, time limit 6 or 12 hours on feet, or 6 hours on bicycle (MTB).

Teams of 2 – 5 members. The competition takes place in accordance with the rogaining ~~competition~~ rules approved by the IRF and LOF. The rules are published on the Latvian rogaining website <http://www.rogaining.lv>

The organization of the competition will take place in accordance with MK order no. 720 "On declaring a state of emergency", the requirements set out in Regulation No. 662 of the MK "Epidemiological safety measures to limit the spread of the Covid-19 infection", and the document approved by the LOF "Procedure for the

implementation of epidemiological safety measures to limit the spread of the Covid-19 infection in the competitions included in the calendar of the Latvian Orienteering Federation". When applying for the competition, the participants confirm that they are familiar with the competition information and undertake to comply with all [the](#) binding rules and instructions.

Additions and special instructions.

1. The competition area is located in the forest area managed by Dzērbenes Parish and A/S [LATVIA'S STATE FORESTS](#) [Latvijas valsts meži](#).

Protect and respect the values created by nature and people!

2. Only [a](#) compass, [wristwatch](#) [clock](#) and [the](#) competition map issued by the organizers may be used for navigation. Any other equipment and facilities may be used for non-navigational purposes.

3. Meeting ~~with~~ dogs and forest animals is possible at a distance.

4. When moving on public [roads](#) [highways](#) and ~~city~~ streets, traffic rules must be followed, in the dark reflectors and lights must be used during ~~darkness~~ [the day](#) ~~???~~.

5. It is forbidden to cross the yards of [homesteads](#) ~~suses~~, unless a road passes through them. It is recommended to go around the [homesteads](#) ~~suse~~ so as not to disturb residents. Prohibited areas - residential areas, gardens, cemeteries - [marked](#) olive green [on the map](#). Other prohibited

territories on the map (nature micro-reserves, [crop fields](#) ~~volumes~~ ~~???~~ and dangerous places) masked with a red grid.

6. Each team must bring a switched-off mobile phone with a charged battery for emergencies ~~in the event of a situation, it would be possible to contact the organizers~~. The mobile phone number of the organizers will be indicated on the race ~~card~~ [map](#).

7. Each team in the distance must bring a WHISTLE. If necessary, the team using a whistle, with several series of short beeps to report their location in case of emergency assistance or an animal encountered on the team's path that threatens the safety of the team.

Competition Program

October 29

from 07:30 arrival of participants at the competition center, registration

08:21 sunrise

09:00 giving out ~~of~~ maps

10:00 start of the competition

12:00 giving out ~~of~~ maps for ~~mtb~~ [MTB](#) competition

13:00 ~~mtb~~ [MTB](#) competition start

16:00 Finish of the 6-hour competition

16:30 End of 6-hour competition

17:00 ~~Closing Final~~ event of the 6-hour competition

17:39 sunset

19:00 [MTB](#) ~~mtb~~ competition finish

19:30 end of [MTB](#) ~~mtb~~ competition

20:00 [MTB](#) ~~mtb~~ competition closing event

22:00 Finish of the 12-hour competition

22:30 End of 12-hour competition

23:00 closing event of the 12-hour competition

Closing of the competition center at 24:00

Formatēts: Pasvītrojums



Competition ~~categories~~ **classes**

MO, WO, XO — ~~open~~ men, women, mixed ~~open~~.

MJ, WJ, XJ — ~~junior~~ men, women, mixed junior (under 23 years of age).

MV, WV, XV — ~~veteran~~ men, women, mixed ~~senior~~ (from 40 years of age).

MSV, WSV, XSV — ~~superveteran~~ men, women, mixed ~~supersenior~~ (from 55 years of age).

MUV, WUV, XUV — ~~ultraveteran~~ men, women, mixed ~~supersenior~~ (from 65 years of age).

Family - at least 2 generations from one family, at least one member is 14 years old or younger, only 6 hour rogaine.

The team must have at least one member who is 18 years ~~old or older or over~~ for 12 hours competition and for 6 hours ~~MTB velo~~ competition.

The age of participants will be determined ~~as~~ on the 29th of October, 2022.

Participants ~~are responsible~~ **for their own health and for insurance against accidents and possible injuries borne by the participants (over 16 years) or their parents / guardians (for participants 16 years and younger). Teams will be registered as complete full team at the event center. At the registration the teams will receive the team package and they have to sign the safety form. will receive participant accessories, will sign by the personal signature responsibility for their own, theirs child or guardians — participants health status, responsibility for possible accidents and possible injuries during the race. Tas jau ir iepriekš pateikts!**

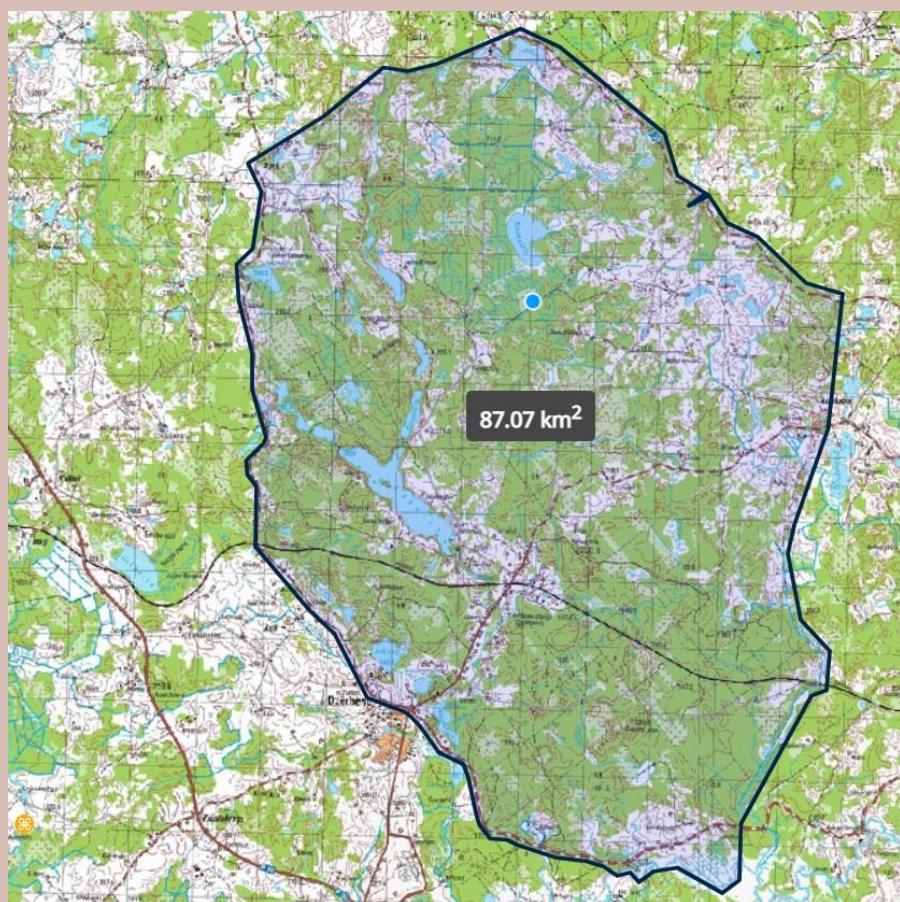
Terrain **Apvidus**

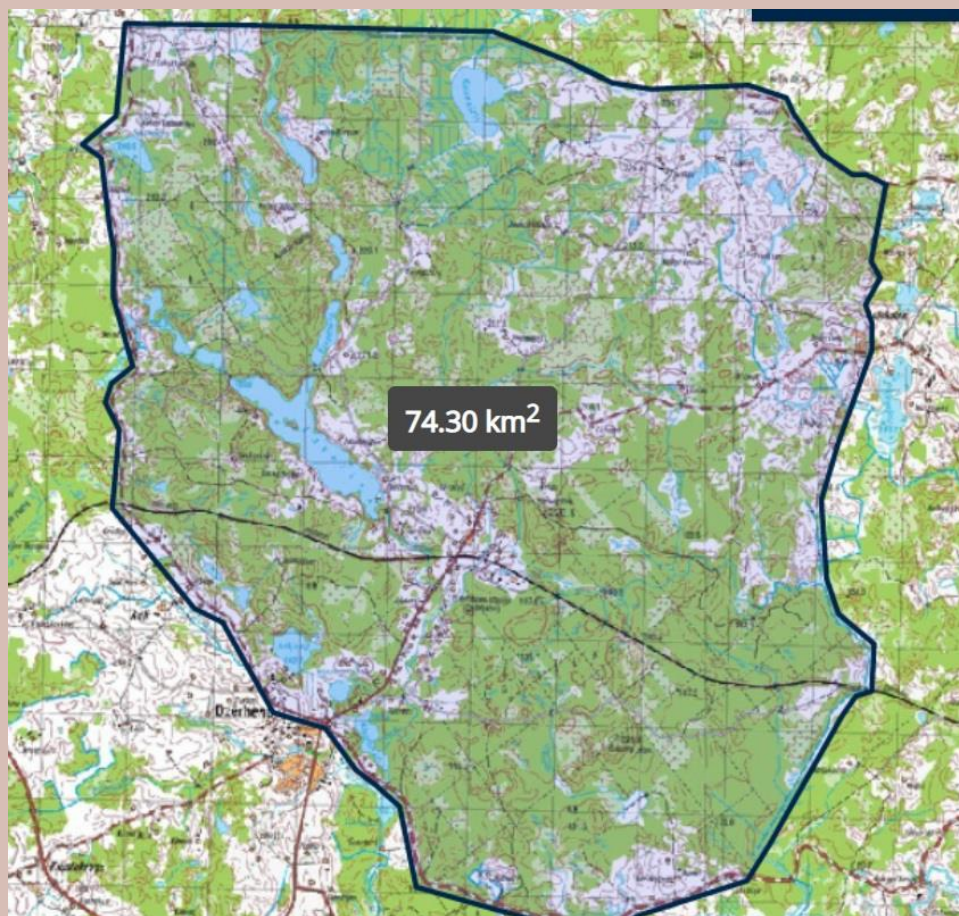
Formatēts: Fonts: Treknraksts

Formatēts: Fonts: Treknraksts

Formatēts: Fonts: Treknraksts

Formatēts: Fonts: Treknraksts





The terrain is various. Most of the area is forest, managed by Saensību apvidus daudzveidīgs. Lielākā daļa MEŽU teritorijas, kur daļu no tām apsaimnieko A/S LATVIA'S STATE FORESTS Latvijas Valsts Mēži. Well developed road network along with forest rides.

In most cases, the open areas are mowed, grazed, groomed, and easy to cross. Pay special attention to electric shepherds. In most cases, they are easily crossed by stepping over or crawling under them. There is a possibility that the electric shepherd is connected. It is strictly forbidden to damage electric shepherds! If the electric shepherd has a "gate", you can open it, but you must close it when you leave!

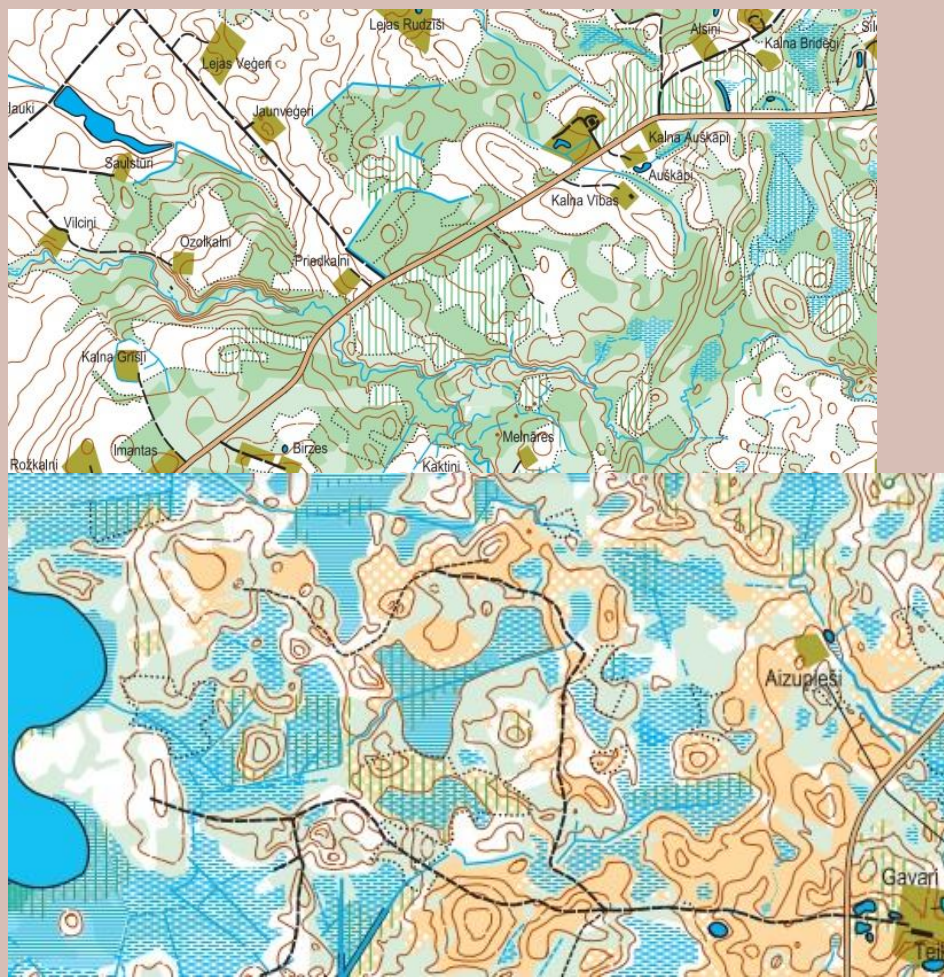
Forest areas are very diverse. There are many clearings of different ages in the area. Some of them are unkempt, difficult to cross. Stigas found in nature are mostly unkempt, except for those used for transport. Some of the natural ditches have been recently maintained and can be used for navigation. There is a possibility to find new clearings and logging roads that are not marked on the map. Apvidu attēlā lauku un meža ceļu un stīgu tīkls.

Distance, CP and punching

50 checkpoints – control flags equipped orientation prisms with reflectors - will be placed in the competition area. Punching system – Sportident (SIAC). **Each participant is attached his contactless The SIAC-card provided by the organizers is attached to competitors' wrists.** Control points have values from 2 to 6 points. Point value is the decimal number of the CKP number, for example CKP with number 33 gives the team 3 points, CKP with number 63 gives 6 points etc. The total value amount of CKP points - 200 points. Every team member should register at the CP within one minute. All team members are marked with their SI card at

the KP. Team members must make marks in one KP within 1 minute. If anyone of the team members has a damaged (broken) SI-card attachment, the team is disqualified.

Map



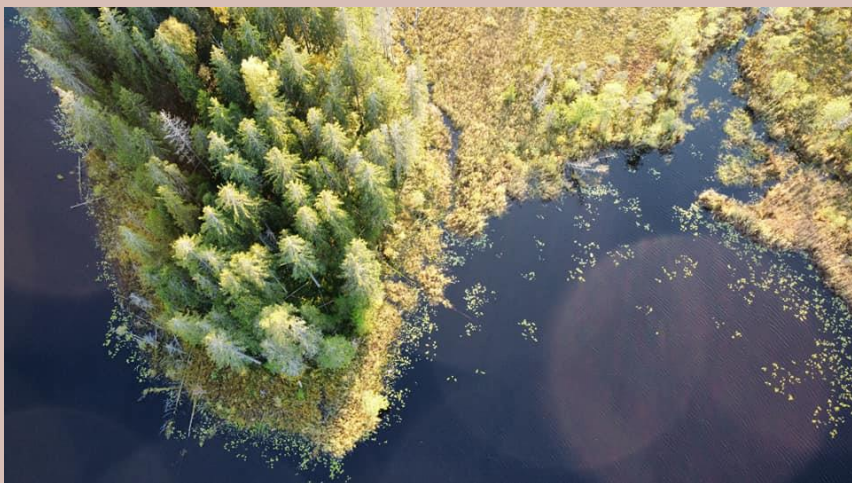
Scale 1:20000, H = 4 m, S ~ 87 km2. Rogaining map prepared in 2021-2022., using the Latvian Geospatial Information Agency (LĢIA), LVM GEO topographical materials, orthophoto (2020) and other information, surveying the territory and planned checkpoint locations. **Open areas are represented by YELLOW background color, forest areas are represented by WHITE or GREEN color.**

Each team will receive a set of maps for team: 1 map for each team member, plus 1 map for the team for distance planning. ALL maps are the same, laminated on both sides.

According to the guidelines of the International Rogaining Federation (IRF), standard or advanced topographic maps are suitable for rogaining competitions. **Let's go back to the "roots" - Neattiecas uz informāciju! Open areas are represented by WHITE background color, ~~opaque~~ overgrown areas are represented by GREEN color.** The size of the map ~~page~~, map designations and usage characteristics will be specified in the pre-start information.

Formatēts: Pasvītrojums

Formatēts: Pasvītrojums



Entry fee for each team member.

Entry fee for each team member.

Participation fee for 1 participant applying	by 02.10.2020.	until 17.10.2020	after 17.10.2020
6 hours in O, V and SV groups-categories		25 EUR	30 EUR
40 EUR			
6 hours in UV and J categories groups	15 EUR		20 EUR
25 EUR			
6 hours in the Family categorygroup			
for those who correspond to groups-categories O, V and SV	25 EUR		30 EUR
40 EUR			
for those who meet UV and J categories groups	15 EUR		20 EUR
25 EUR			
participants up to 14 years of age.	10 EUR	10 EUR	10 EUR
12 hours in in-groups O, V and SV categories		25 EUR	30 EUR
40 EUR			
12 hours in UV and J categories groups		15 EUR	20 EUR
25 EUR			
12 hours in the Family groupcategory			
for those who correspond to categoriesgroups O, V and SV	25 EUR		30 EUR
40 EUR			
for those who correspondmeet to categories UV and J groups		15 EUR	20
EUR 25 EUR			
participants up to 14 years of age.	10 EUR	10 EUR	10 EUR
In MTB groups - the same as members of 6-hour categoriesgroups .			

Participation fees cover competition preparation, contactless SI cards, catering, competition center rent and others organizational expenses. The participation fee can be paid by bank transfer to the bank specified in the application process account, indicating the number of the registered team: LV64UNLA0050020516945, Sports club R24.LV-~~society~~, reg. 40008206944. The application for the competition is also a guarantee for the payment of the participation fee. participants, who apply but refuse to start by sending a written refusal by October 24 can get back 50% of paid membership fees. **The organizer returns the full participation fee in case the competition is cancelled or are not possible due to external circumstances.**



Water intake points, catering, service

Watering points with water reservoirs will be placed in the competition area and drinking water intake points available in the area will be marked. Catering - after the finish for participants of both 6-hour and 12-hour distances, [traditional for omnivores](#) and vegetarians. Toilets and [garbage-bags](#) will be available in the competition center.

Applications

Registration from September 27, 2022 to October 24, 2022. Organizers will provide SIAC-cards.

The teams submit [theirs](#) applications online by filling out the application form on the website <http://www.rogaining.lv>

Participants can edit team data online until October 24. Send all changes or refusals after October 24 to the e-mail: valtersk@latnet.lv!

Awarding

The teams with the best results in each [category](#) and [time and participant classification group](#) will be awarded. The organizers can change the number of awarded teams depending on the number of participating teams in the groups and the budget of the competition.

Information

Contact information: (+371) 29218759, valtersk@latnet.lv

Bulletin No. 2 will be published on October 17, 2022. [20.10.2022](#)



